

HIGH BAY



HIGH BAY



เลข.902 เล่ม 2(1)-2563



TIS 1955 2551



Signature
Designed by WIP

VICTORIA SERIES

Specification

The light shell is die-casting technology with excellent thermal management, reduces the temperature difference, and ensures the lumen depreciation. Integrated breather valve, balances the internal & external temperature and humidity. Ingress protection IP66. High-strength polycarbonate lens, achieves IK08, Anti-UV transmittance>94%. The High Bay lighting optic series comes with a 3 years warranty. It can be widely applied in Warehouse, Factory, Workshop, Plant, Supermarket, Gas Station, Highway Toll Station, Logistics center, indoors stadium light, underground parking lot, etc.

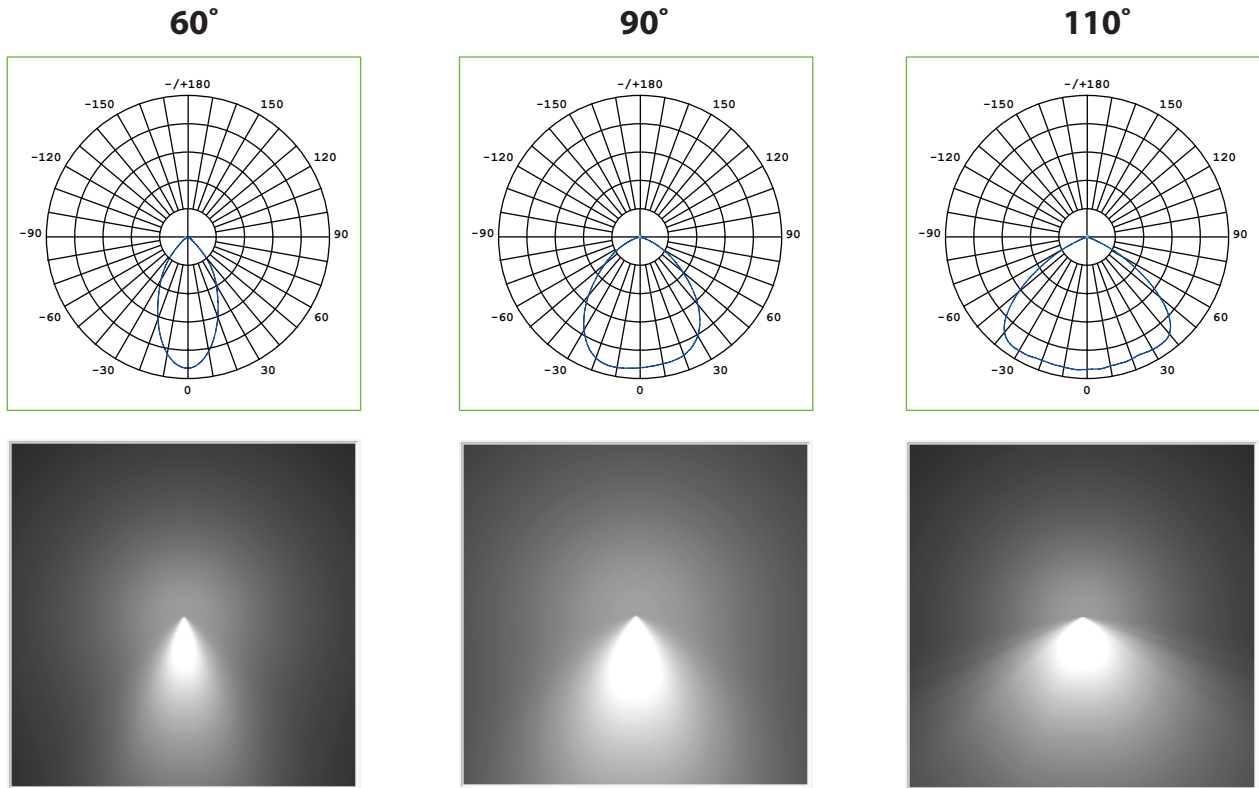
Input Voltage	100-240VAC50/60Hz.	Lens Material	PC	Housing	Die-cast Aluminium
Input Voltage Range	100-305VAC50/60Hz.	LED Light Source	Everlight	Finishing	Power Coated in black
Power Factor	>0.95	CRI	>80	Gasket	Silicone
Work Temperature	0°C to + 55°C	Driver	Moso, Sosen	Mount	Hook
LED Life Time	50,000 hrs.	Dimmable	3-in-1 isolated dimming:	Surge Protection	4kv
CCT	3000K (Warm White), 4000K (Cool White), 5000K (Cool Daylight), 6500K (Daylight)		0-10Vdc, PWM, Resistor	IP Rating	IP67
				Warranty	3 Years

Model	Power (W)	Lumen Flux (lm)	Efficiency (lm/W)	Weight (Kg.)	Ø Diameter (mm.)	Standard
WV61-80	80	12,000	150	2.10	Ø 305* 42	
WV61-100	100	15,000	150	2.10	Ø 305* 42	
WV61-120	120	18,000	150	2.10	Ø 305* 42	
WV61-150	150	22,500	150	2.10	Ø 305* 42	
WV61-200	200	30,000	150	3.00	Ø 305* 54	
WV61-240	240	32,400	135	3.00	Ø 305* 54	

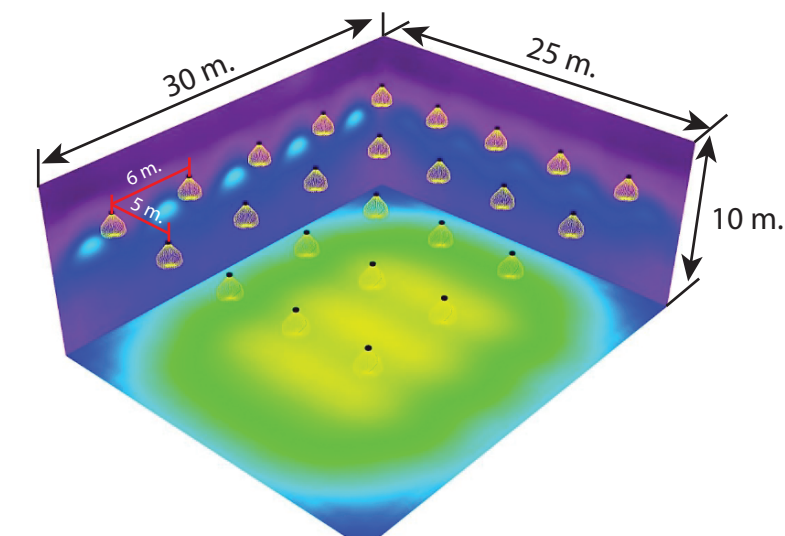
IEC/EN 55015	Limits and methods of measurement of radio disturbance characteristics of electrical lighting and similar equipment
IEC/EN 60598-1	General requirements and tests
IEC/EN 60598-2-1	Particular requirements. Section One : Fixed general purpose luminaires
IEC/EN 61000-3-2	Limits - Limits for harmonic current emissions
IEC/EN 61000-3-3	Limits - Limitation of voltage changes, voltage fluctuations and flicker in public low-voltage supply systems
IEC/EN 61547	Equipment for general lighting purposes - EMC immunity requirements
IEC 62471	Photobiological Safety of Lamp and lamp System
IEEE 1789	Recommended Practices for modulating Current in High brightness LEDs for Mitigating Health Risk to viewers
CISPR 15	Limits and methods of measurement of radio disturbance characteristics of electrical lighting and similar equipment

HIGH BAY

LENS



Simulation

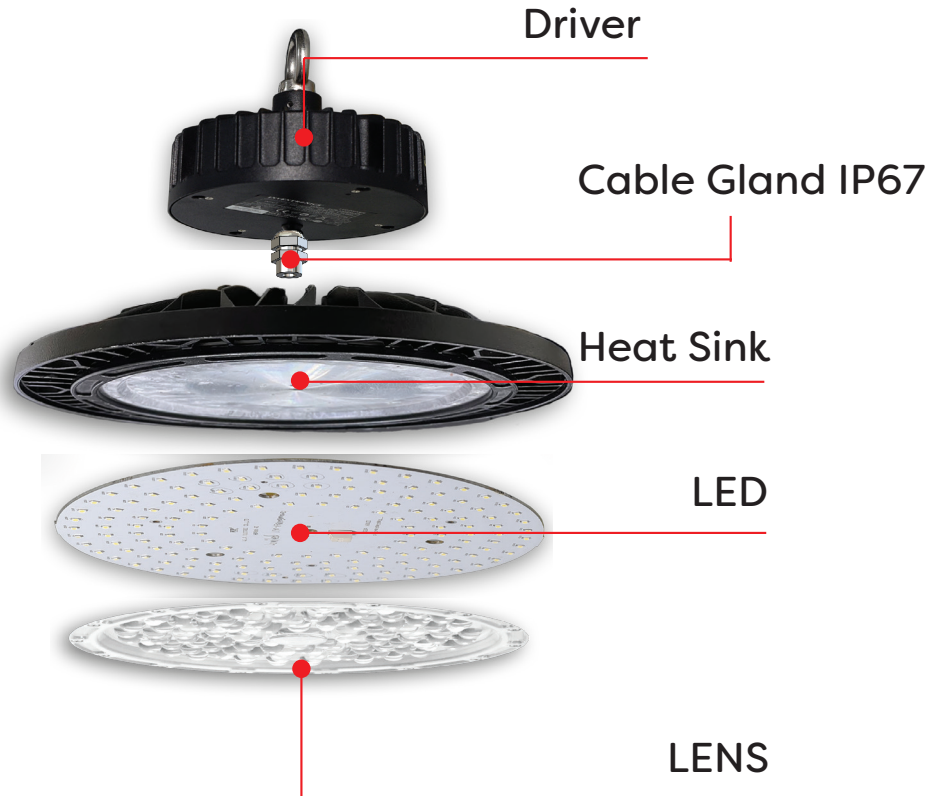


High Bay Victoria WV61-L90
Mounting Height : 10 m
Luminaire Wattage : 120W
Lux on floor : Eva 409 lx
Specific connected load :
4.00 W/m² = 0.93 W/m²/100 lx
(Ground area : 750.00 m²)



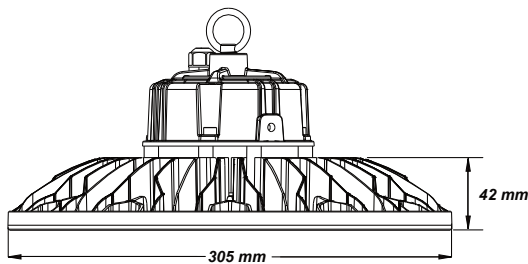
HIGH BAY

Assembly Parts

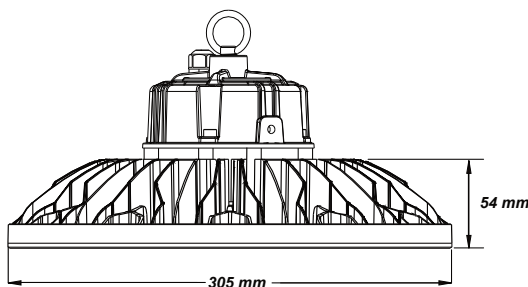


Dimension (in mm.)

Type A



Type B



Model	Type	Ø Diameter (mm.)
WV61-80	A	Ø 305* 42 mm.
WV61-100	A	Ø 305* 42 mm.
WV61-120	A	Ø 305* 42 mm.
WV61-150	A	Ø 305* 42 mm.
WV61-200	B	Ø 305* 54 mm.
WV61-240	B	Ø 305* 54 mm.

HIGH BAY

Smart Lighting Solution

Option Microwave Sensor



Sensor Remote Programmer

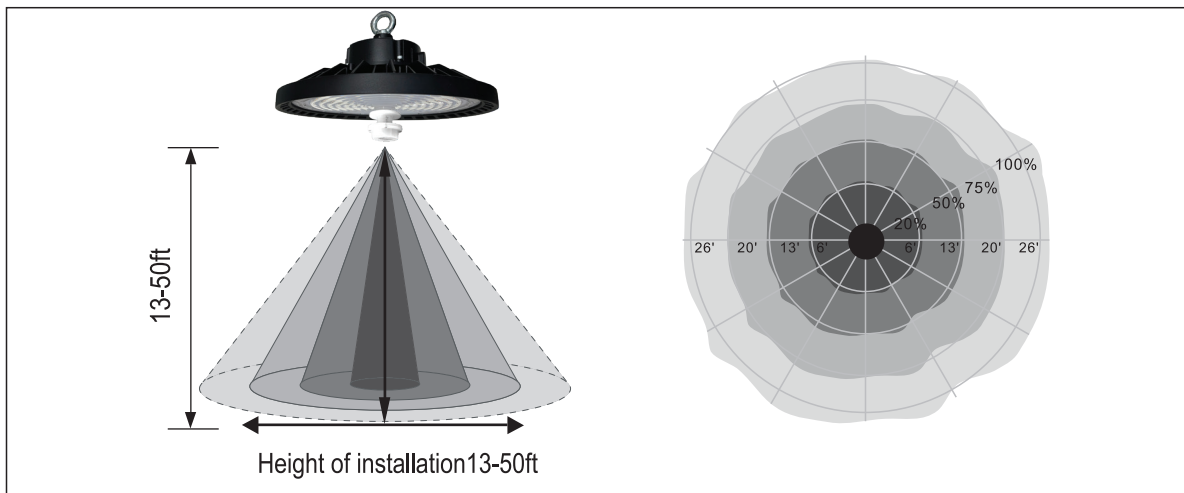


Microwave Sensor

Microwave Sensor (Option)

Dim Control Option	0-10V, Max. 25mA, Sinking Current
HF System	5.8GHz. +/- 75 MHz.
Transmission Power	<0.2mW
Mounting High	Max. 50ft (15 Meters)
Brightness Setting	70%, 80%, 90%, 100%
Detection Radius	20%, 50%, 75%, 100%
Hold Time Setting	10S, 1m, 5m, 10m, 15m, 20m, 30m, 60m
Daylight Sensor Setting	Light On (Lux) : 10, 30, 50 Light Off (Lux) : 100, 300, 500
Stand By Setting	Dim : 0%, 10%, 30%, 50% Time : +∞, 1m, 30m, 60m
Mode Selected	Mode1, Mode2, Mode3 and Mode4

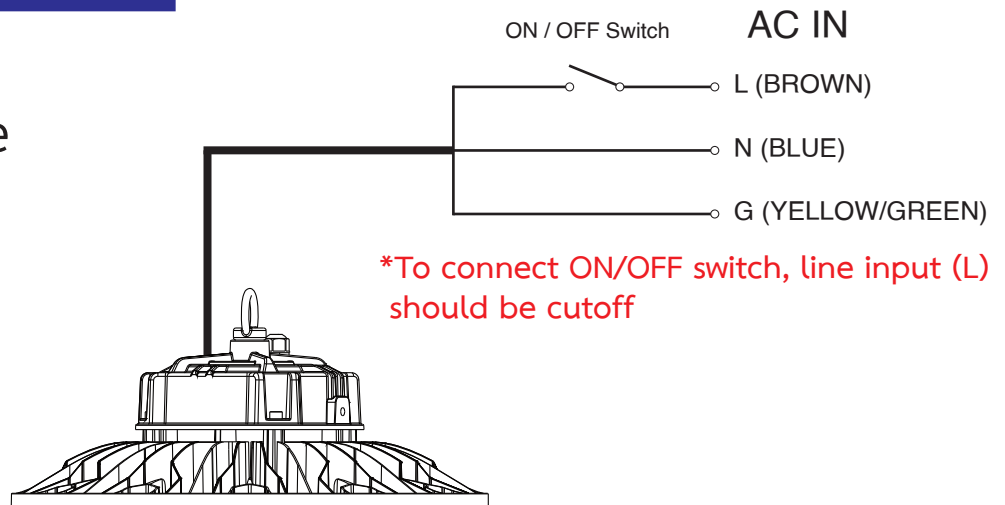
SENSOR COVERAGE



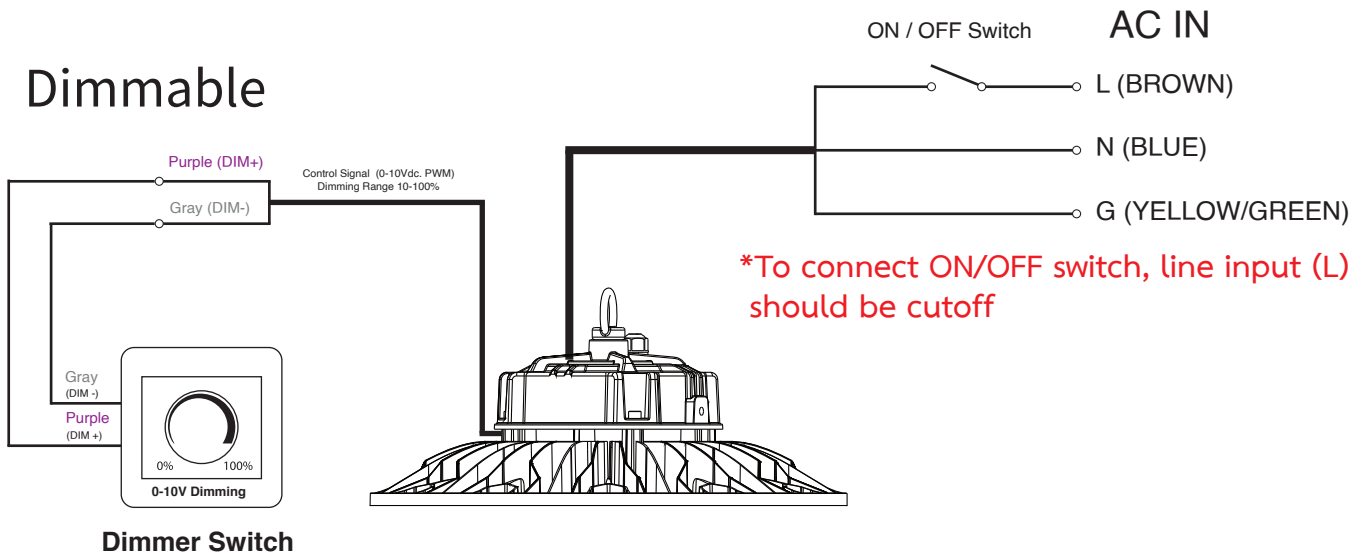
HIGH BAY

Wiring Connection

Non Dimmable



Dimmable



Microwave Sensor

