

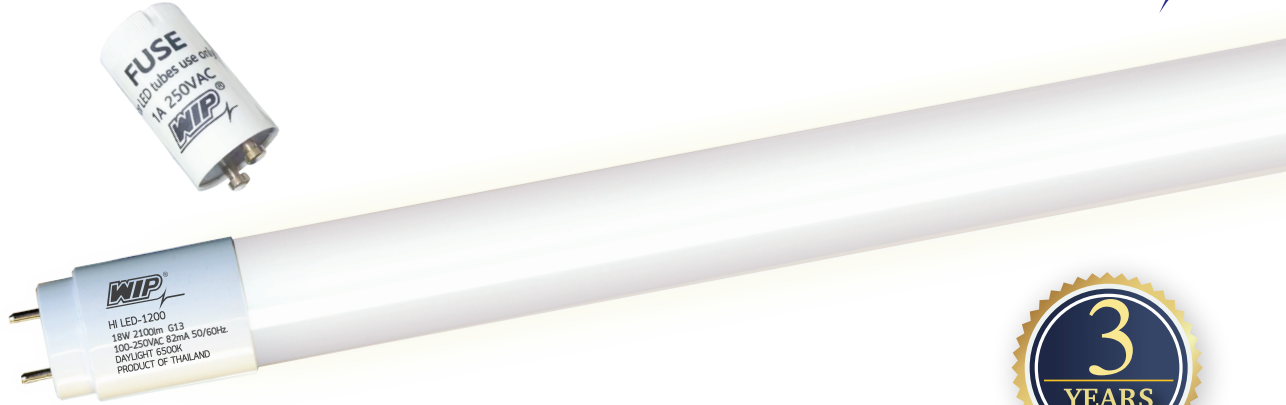
LED TUBE T8



LED TUBE T8



TIS. 1955-2551
TIS. 2779-2562



Signature
Designed by WIP

HI LED : LED T8 SERIES

Specification

| | | | |
|------------------|--------------------------------------|------------------|---|
| Input Voltage | 100-250VAC50/60HZ. | CCT | 1500K, 1800K, 2000K, 2700K, 3000K, 3500K, 4000K, 5000K, 6500K, 7000K, 7800K |
| Power Factor | >0.95 | Surge Protection | 1kV |
| Base Type | G13 | Weight | <200g. |
| Work Temperature | -10°C to + 65°C | Warranty | 3 Years |
| LED Light Source | Everlight | | |
| LED Life Time | 50,000 hrs. | | |
| CRI | >80 (1500K-6500K), >90 (2700K-7800K) | | |

HI LED : LED T8 20 Watts

| Model | Power (W) | Luminous Flux (lm) | Efficiency (lm/W) | Total Harmonic Distortion | Length (mm.) | Standard |
|-----------------------------------|-----------|--------------------|-------------------|---------------------------|--------------|----------|
| HI LED-1200 1200 mm 20W 3300Lm | 20 | 3,300 | 165 | <10%, <15% | 1,200 | |
| HI LED-1200 1200 mm 20W 3100Lm | 20 | 3,100 | 155 | <10%, <15% | 1,200 | |

HI LED : LED T8 18 Watts

| Model | Power (W) | Luminous Flux (lm) | Efficiency (lm/W) | Total Harmonic Distortion | Length (mm.) | Standard |
|-----------------------------------|-----------|--------------------|-------------------|---------------------------|--------------|----------|
| HI LED-1200 1200 mm 18W 2700Lm | 18 | 2,700 | 150 | <10%, <15% | 1,200 | |
| HI LED-1200 1200 mm 18W 2600Lm | 18 | 2,600 | 144 | <10%, <15% | 1,200 | |
| HI LED-1200 1200 mm 18W 2500Lm | 18 | 2,500 | 139 | <10%, <15% | 1,200 | |
| HI LED-1200 1200 mm 18W 2300Lm | 18 | 2,300 | 128 | <10%, <15% | 1,200 | |
| HI LED-1200 1200 mm 18W 2100Lm | 18 | 2,100 | 117 | <10%, <15% | 1,200 | |

LED TUBE T8



TIS. 1955-2551
TIS. 2779-2562



HI LED : LED T8 16 Watts

| Model | Power (W) | Luminous Flux (lm) | Efficiency (lm/W) | Total Harmonic Distortion | Length (mm.) | Standard |
|-----------------------------------|-----------|--------------------|-------------------|---------------------------|--------------|----------|
| HI LED-1200 1200 mm 16W 2300Lm | 16 | 2,500 | 156 | <10%, <15% | 1,200 | |
| HI LED-1200 1200 mm 16W 2300Lm | 16 | 2,300 | 144 | <10%, <15% | 1,200 | |
| HI LED-1200 1200 mm 16W 2100Lm | 16 | 2,100 | 131 | <10%, <15% | 1,200 | |

HI LED : LED T8 14 Watts

| Model | Power (W) | Luminous Flux (lm) | Efficiency (lm/W) | Total Harmonic Distortion | Length (mm.) | Standard |
|-----------------------------------|-----------|--------------------|-------------------|---------------------------|--------------|----------|
| HI LED-1200 1200 mm 14W 2300Lm | 14 | 2,300 | 164 | <10%, <15% | 1,200 | |
| HI LED-1200 1200 mm 14W 2100Lm | 14 | 2,100 | 150 | <10%, <15% | 1,200 | |

HI LED : LED T8 9 Watts

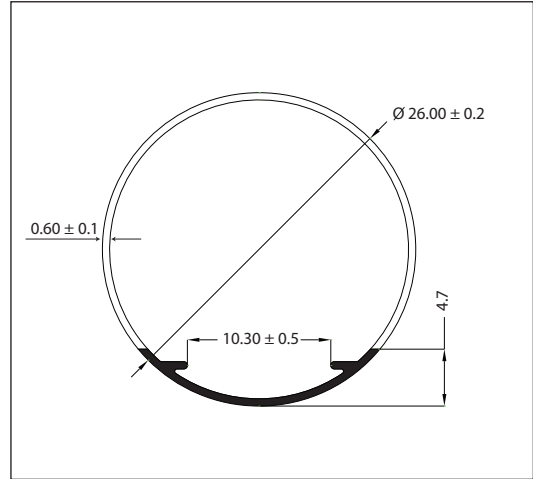
| Model | Power (W) | Luminous Flux (lm) | Efficiency (lm/W) | Total Harmonic Distortion | Length (mm.) | Standard |
|---------------------------------|-----------|--------------------|-------------------|---------------------------|--------------|----------|
| HI LED-0600 600 mm 9W 1300Lm | 9 | 1,300 | 144 | <10%, <15% | 600 | |
| HI LED-0600 600 mm 9W 1250Lm | 9 | 1,250 | 139 | <10%, <15% | 600 | |
| HI LED-0600 600 mm 9W 1050Lm | 9 | 1,050 | 117 | <10%, <15% | 600 | |

International Electrotechnical Commission - IEC

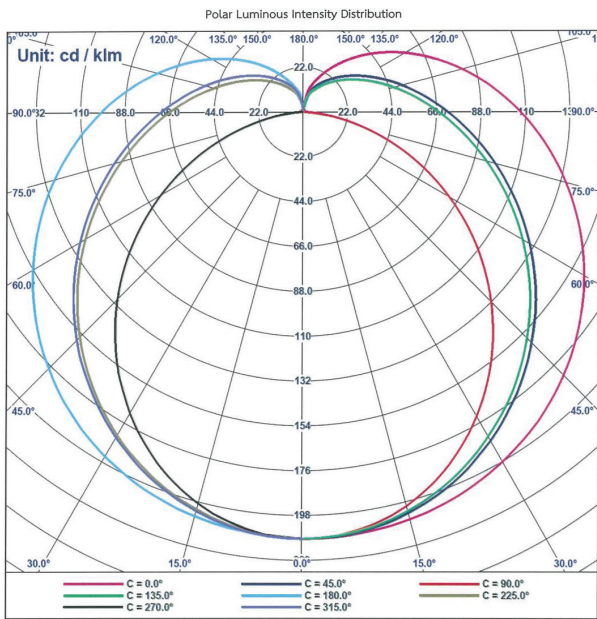
| | |
|--|--|
| IEC 55015 : Radio disturbance characteristics | IEC 61000-3-3 : Limitation of voltage |
| IEC 60061 : G13 Standard Dimension Test | IEC 61000-4-5 : Surge Protection |
| IEC 60529 : Ingress Protection | IEC 61195 : Compressive Strength |
| IEC 60598-1 : General Requirements and Tests | IEC 61547 : EMC : Conducted immunity |
| IEC 61000-3-2 : Harmonic Emission | IEC 62776 : Fault Condition |
| IEC 61347-2-13 : General and safety-Lamp System Short Circuit Protection | IEC 62471 : Photobiological safety of lamps and lamp systems |

LED TUBE T8

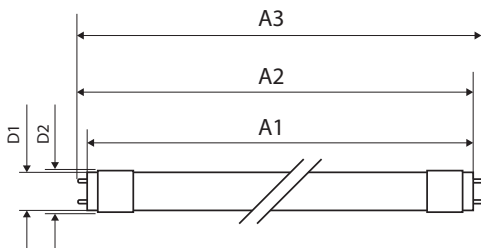
TUBE



BEAM ANGLE

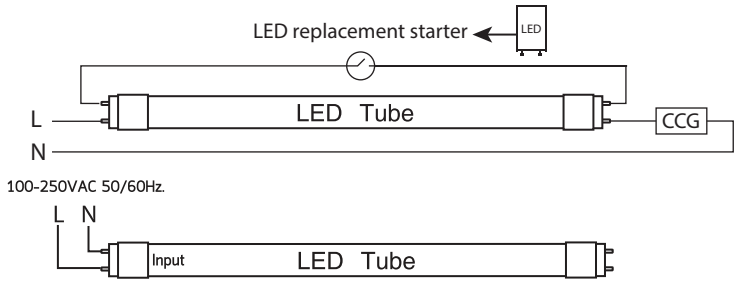


DIMENSION



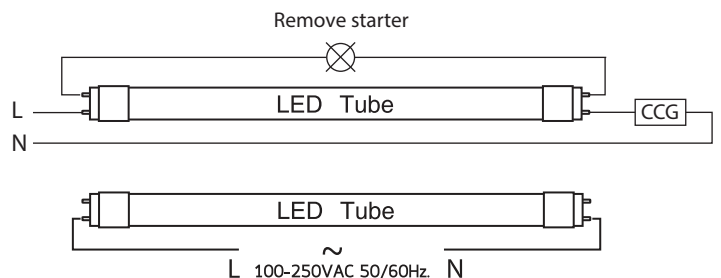
WIRING DIAGRAM

W1 Wiring Type Single end



Single - end ไฟเข้า 1 ข้าง

W2 Wiring Type Double end



Double - end ไฟเข้า 2 ข้าง

Dimension (mm.) ± 1.0

| Product | A1 | A2 | A3 | D1 | D2 |
|---------|------|------|------|----|------|
| T8 18W | 1198 | 1205 | 1212 | 26 | 28.5 |
| T8 9W | 588 | 595 | 602 | 26 | 28.5 |