

# HIGH CRI AND CLEAR WHITE COLOR LEDS



*Signature  
Designed by WIP*



## LED Linear Magnetic Track Light

Specification	High CRI and Clear White LEDS Color			
Power Consumption	14W	28W	42W	56W
Input Voltage	48 VDC	48 VDC	48 VDC	48 VDC
Light Source Flux (Lm)	1,400 Lm	2,800 Lm	4,200 Lm	5,600 Lm
Efficacy	100 Lm/W	100 Lm/W	100 Lm/W	100 Lm/W
Power Factor	0.95	0.95	0.95	0.95
Beam Angle	~30° wide beam, ~55° widebeam, ~65° widebeam			
Work Temperature	-10°C to + 65°C	-10°C to + 65°C	-10°C to + 65°C	-10°C to + 65°C
LED Life Time	50,000 hrs.	50,000 hrs.	50,000 hrs.	50,000 hrs.
Dimmable	Dim, Non Dim	Dim, Non Dim	Dim, Non Dim	Dim, Non Dim
Optic Material	PMMA	PMMA	PMMA	PMMA
LED Light Source	Nichia	Nichia	Nichia	Nichia
Color Rendering Index (CRI)	>90	>90	>90	>90
Color Temperature (CCT)	7800K			
Housing Material	AL profile			
Finishing	Powder Coated in black			
Shade	Black, White			
Dimension (in mm.)	29x284x50	29x564x50	29x844x50	29x1,124x50
Mount & Rail	Rail Hanging & Magnet Track Rail			
Total Weight (Kg.)	0.335	0.670	1.005	1.340
Warranty	1 Year			

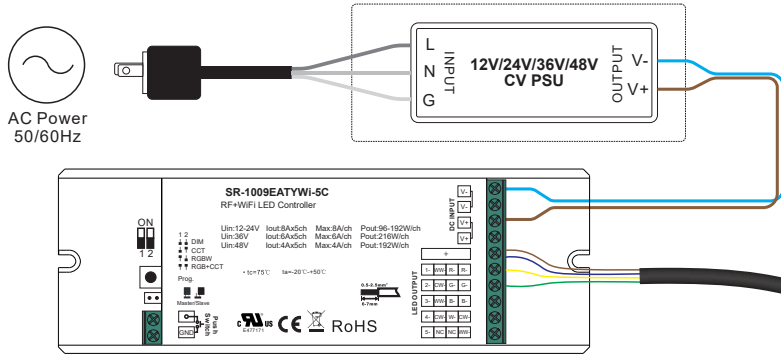
# ACCESSORIES

Option

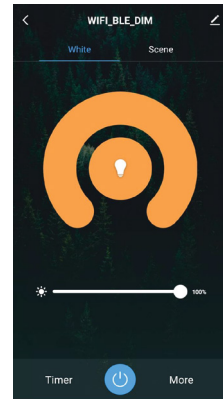


## Dimmable Control

Power Supply



Set up through the Application



### Product Data

Input Voltage	Output Current	Output Power	Connector Current Rating	Wire Size	Remarks	Size(LxWxH)	Ambient Temperature	Max. Casing Temperature
12-48VDC	Max. 8A/CH@12V/24V Max. 6A/CH@36V Max. 4A/CH@48V	Max. 96W/CH@12V Max. 192W/CH@24V Max. 216W/CH@36V Max. 192W/CH@48V	Max. 20A	0.05-3.3mm <sup>2</sup> (12-30AWG)	Constant voltage	170x59x29mm	-20°C ~ +50°C	75°C

### Product Features

- 4 in 1 RF+WiFi+Push Dim LED controller
- 5 channels 12/24V/36V/48V constant voltage output
- Max. 8A output per channel
- Enables to set the device type via DIP switches
- 4 device types are available for setting: DIM, CCT, RGBW, RGB+CCT
- Can be controlled through Tuya smart APP
- Cloud control enabled based on Tuya platform
- Voice control enabled, can be controlled through Amazon Alexa & Google Assistant
- Local control available through RF remotes even without WiFi network
- Sub-1GHz RF frequency: 434/869.6/916.5MHz
- Compatible with universal legacy RF remotes
- With push dim function, can be controlled through existing push switches even without WiFi and RF remotes
- Waterproof grade: IP20

### RF+WiFi LED Controller



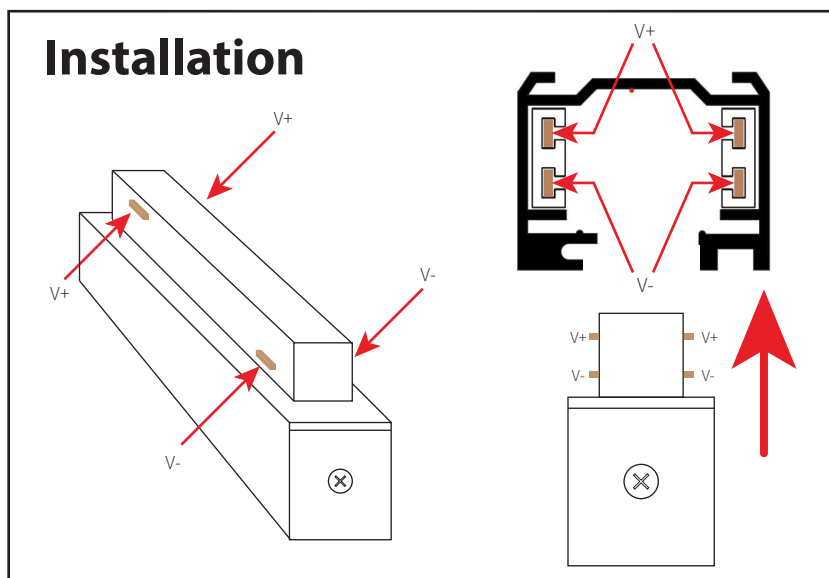
Product Code : 7726  
Model : SR-1009EATYWI-5C

### Monochrome RF Rotary LED Controller



SR-2835Dim instruction

Product Code : 7727  
Model : SR-2835DIM



ช่องทางการสั่งซื้อ



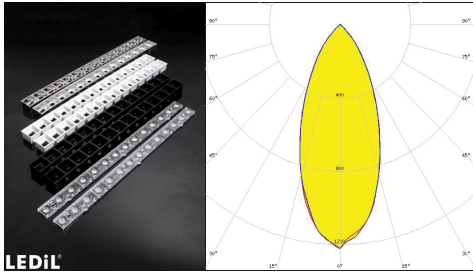
@wipintertrade wipelectric



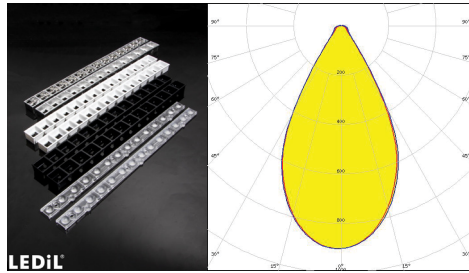
02-525-8825-8  
02-410-5030-4

# ACCESSORIES

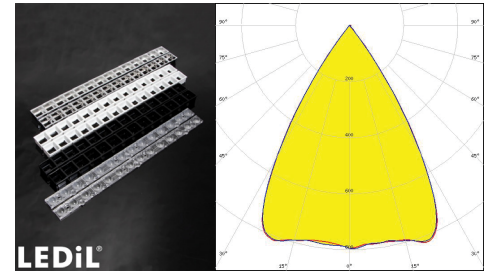
## LENS



~30° wide beam



~55° wide beam

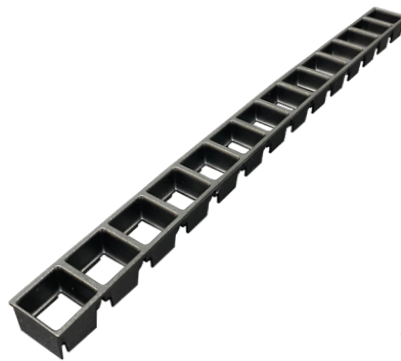


~65° wide beam

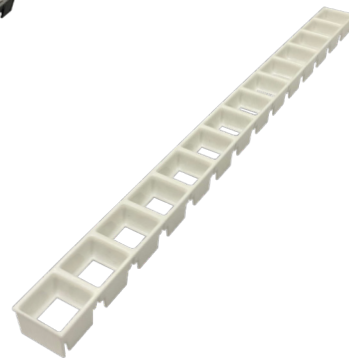
## Shade



Ledil

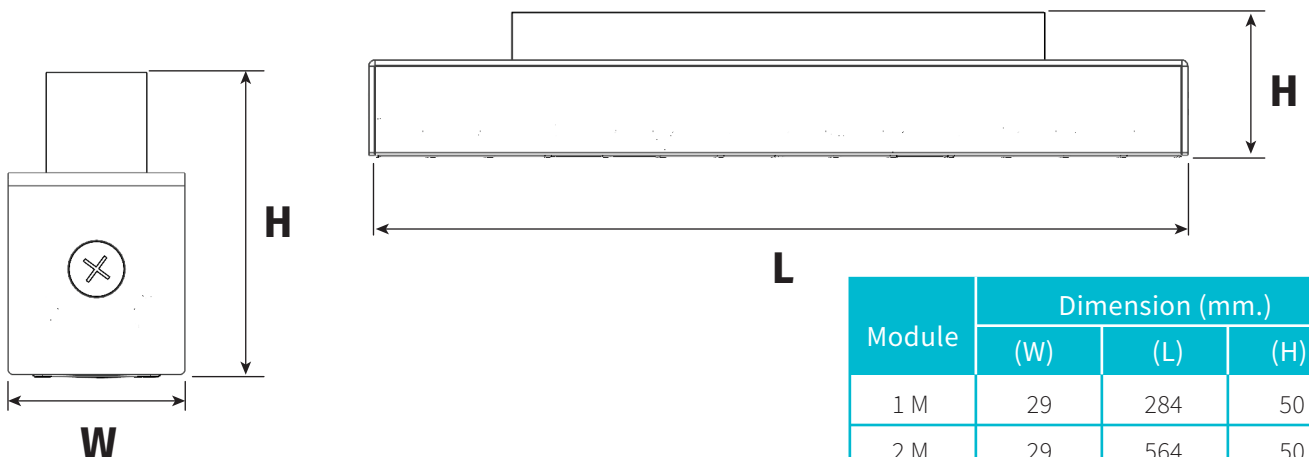


black matt



white matt

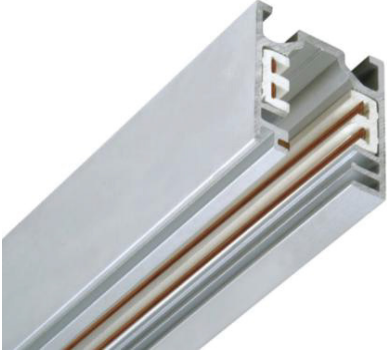
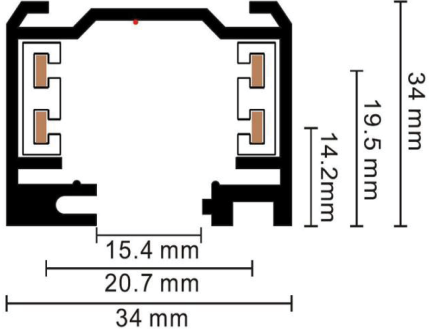


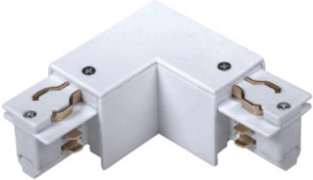

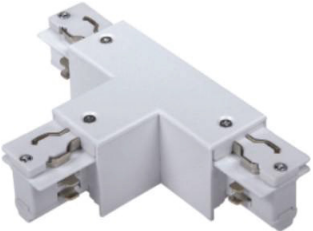



## Dimension (in mm.)



Module	Dimension (mm.)		
	(W)	(L)	(H)
1 M	29	284	50
2 M	29	564	50
3 M	29	844	50
4 M	29	1,124	50

# ACCESSORIES

## 4 Wires Track (Surface Mounted / Suspension) (Single Circuit / 1-Phase) Aluminum Track Rail & Accessories

	<b>Name:</b> 4 Wires Track Light Rail <b>Model NO:</b> T042 <b>Shell Material:</b> 2.5mm Aluminum <b>Conductor:</b> 3.5*1mm Red Copper <b>Flame Retardant Grade:</b> V1 <b>Accessories:</b> Feeder & End cap & Mounting Hardware be <b>included</b> <b>Package Size:</b> 104*20*10cm(1m) <b>Qty:</b> 10pcs/ctn <b>GW:</b> 11kg/ctn (1m)		
	<b>Name:</b> Straight Connector <b>Model NO:</b> T042-I <b>Finish Color:</b> Black /White <b>GW.:</b> 0.04KG/PCS		<b>Name:</b> Flexible Connector <b>Model NO:</b> T042-R <b>Finish Color:</b> Black /White <b>GW.:</b> 0.27KG/PCS
	<b>Name:</b> L Connector <b>Model NO:</b> T042-L <b>Finish Color:</b> Black /White <b>GW.:</b> 0.18KG/PCS		<b>Name:</b> Hang Rope <b>Model NO:</b> T042-HR <b>Finish Color:</b> Black /White <b>Length:</b> 1m (Customize L) <b>GW.:</b> 0.18KG/PCS
	<b>Name:</b> T Connector <b>Model NO:</b> T042-T <b>Finish Color:</b> Black /White <b>GW.:</b> 0.27KG/PCS		<b>Name:</b> Track Adapter Box <b>Model NO:</b> THB418 <b>Finish Color:</b> Black /White <b>GW.:</b> 0.1KG/PCS
	<b>Name:</b> X Connector <b>Model NO:</b> T042-X <b>Finish Color:</b> Black /White <b>GW.:</b> 0.31KG/PCS		<b>Name:</b> 4 wires Track <b>Model NO:</b> TH409 <b>Finish Color:</b> Black /White <b>GW.:</b> 0.04KG/PCS

